

M400 SMS Gateway

High-Capacity SMS Messaging Platform

Key benefits

SMS Server

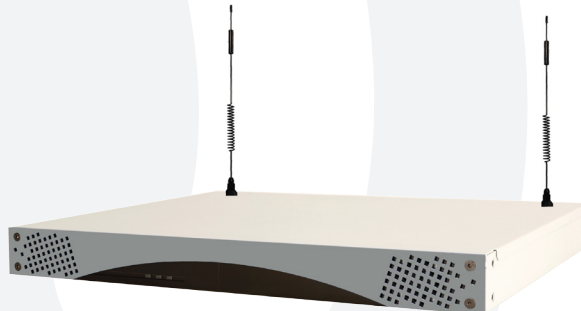
Powerful API for easy integration

Multiple SMS Campaign

No Need for SMSC Connectivity

From 4 to 16 channels

The **M400 SMS Gateway** provides a high capacity messaging platform for enterprises. The two-way SMS Gateway allows complete integration into existing applications via powerful API to create automated SMS services. The M400 SMS Gateway can be installed as a **standalone** unit on a single site or as a **network connectivity device** with centralized management.



M400 SMS Gateway: Main Benefits

› SMS Server flexibility

The M400 SMS Gateway allows from **4 to 16 simultaneous SMS channels**. Multiple M400 SMS Gateway can be stacked to offer a greater capacity.

› Powerful APIs for easy routing

The M400 SMS Gateway provides **HTTP, SMTP and SMPP** connectivities with enterprise applications. The API provides complete access to stored incoming SMS message and **complete administration** of SMS gateway capabilities.

› Always ON SMS Campaign

The **M400 SMS Gateway** provides a Always ON messaging connectivity to the mobile network. This gives enterprise application capability to send SMS at any time in real time.



M400 SMS Gateway

High Capacity SMS Messaging Platform

Send SMS without any SMSC link !

The M400 SMS Gateway provides to **enterprise applications direct connectivity** to mobile network for sending and receiving SMS messages. You are not linked to a provider with annual contract fee and minimum quota of SMS per month : you can send **as many SMS you want starting with a few to many**. The M400 SMS Gateway is a platform which adapts to your needs and not the reverse. It provides also the capability to choose one or more service providers for **convenience or cost management**.

M400 SMS Gateway Features

SMS Capability	From 4 to 16 GSM Channels Quadband GSM (850-900-1800-1900 MHz) Recommanded GSM coverage : -80dB SMS Only - No Voice Capacity
Local network	Ethernet 10/100 Mbps TCP/IP Protocol
Dimensions	400 mm x 325 mm x 45 mm (LxDxH) 19" Rackable 1U
Weight	8 Kg
Compliance	CE marking, ROHS, NOM, FCC
Power Supply	Autoranging power supply 100-240 V AC
Management	Web interface & configuration wizard Monitoring through iQsim Management Console

PART NUMBERS

M400-4GQ-SMS	4 SMS Channels
M400-8GQ-SMS	8 SMS Channels
M400-12GQ-SMS	12 SMS Channels
M400-16GQ-SMS	16 SMS Channels
Q400-HD-20	Additional Storage (Option)

Headquarters
«Les Algorithmes Aristote A»
2000 Route des Lucioles
06410 Biot - France
Phone: +33 4 97 04 19 30
Paris, France
Phone: +33 4 97 04 19 38

Kuala Lumpur, Malaysia
Phone: +60 143 239 528
São Paulo, Brazil
Phone: +55 11 3526 6745
Mexico, DF, Mexico
Phone: +52 559 000 5601

